

Speedfil A2 Includes:

1. Buckle Strap
2. Ring Cap
3. Bite Valve
4. Socket O-Ring
5. Ball
6. Socket
7. Threaded Collar O-Ring
8. Socket
9. Neoprene Sleeve
10. Drink Tube #1
11. A2 Adapter
12. Grommet
13. Elbow
14. Drink Tube #2
15. Nylon Cable Ties



Speedfil Aerobundle Includes:

- Speedfil A2 (above)
- 1. Garmin Adapter Arm
- 2. Drink Tube Clip
- 3. Z4 Cage
- 4. Non-Slip Plug Strap*

*If Purchased as an Aerobundle kit the buckle strap is replaced with the Z4+ non-slip plug strap.



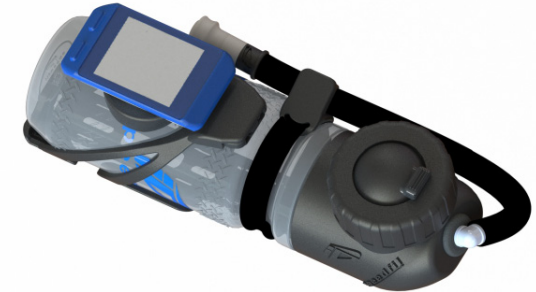
Note: Before each use check the integrity of the Z4 cage, & any support structure(s). If using a Garmin 1/4 turn mount & computer be sure the mount/computer is not only seated properly but is free from defect. Failure to examine product(s) & take corrective action may result in damaged or lost equipment or bodily injury & may void warranty. It is the owners responsibility to maintain proper working order of equipment.

The Z4 cage is intended to be used with the **Garmin® Quarter Turn Bike Mount**.

The **Garmin® Quarter Turn Bike Mount** (Part# 010-11430-00) is included with your Garmin® computer product or is sold separately through authorized Garmin® resellers.

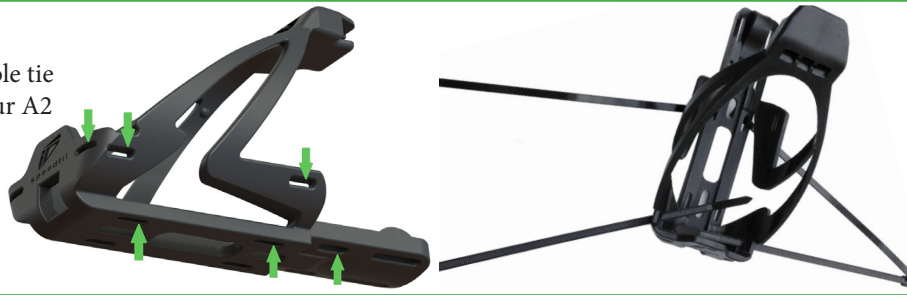


AERO BUNDLE



1

- The Z4 cage has multiple nylon cable tie ports. Use four ports that angle your A2 in the desired position.



2



- If purchased as **A2 only**, a standard cage can be mounted in a similar configuration dependent on the cage of choice.
- All cages can be mounted in a forward or reverse direction.
- the Z4 cage can mount (bolt/thread) on any existing mount designed to hold a standard cage.

3



- If purchased with the Z4 cage attach the hook & loop plug strap and tube clip as shown above.
- If purchased as **A2 only**, a buckle strap is provided to secure the A2 around the bottle neck and your standard cage.

4



- Cut drink tubes to desired length.
- Cut tube end closest to back of bottle at a 45° angle.

LIMITED WARRANTY

Inviscid Design, Inc. ("Inviscid"), the manufacturer of the *speedfil* product (the "Product") hereby extends the following LIMITED WARRANTY to the original retail owner of the Product ("Purchaser"):

Item(s) Covered: Any defect in material or workmanship of the Product, or any portion thereof.
Term: One (1) year from the date of retail purchase.

1. **Inviscid's Responsibility:** Inviscid shall, at its sole option, either repair or replace the defective item. Inviscid shall be responsible for shipping and handling charges incurred in returning the replaced or repaired Product to Purchaser. Inviscid shall not be responsible for refunding any amounts paid for the Product, and shall not be responsible for any damage to any other property or persons arising from the use of the Product.

2. **Purchaser's Responsibility:** Purchaser shall be responsible for all shipping and handling charges incurred in sending the product back to Inviscid for repair or replacement. Purchaser shall also be responsible for providing the original receipt or other satisfactory evidence of the first date of retail purchase.

3. **Claim Procedure:** Any claim under this warranty should first be initiated with the retailer who sold the Product. If this is not practicable, the owner should contact Inviscid according to the contact information set forth at Inviscid's website, located at <http://www.invisciddesign.com/>, the following address: Inviscid Design, Inc. 7040 Avenida Encinas, Suite 104-657, Carlsbad, CA 92011 or such other address show as on the California Secretary of State's website. Purchaser shall first obtain authorization for return of the product prior to sending the product directly to Inviscid Design Inc.

4. **Limitations:** This warranty does not apply to any use of the Product not according to the express directions accompanying the Product, or use with non-approved accessories. This warranty also does not apply to any damage caused by Purchaser's negligence or other misuse, to ordinary wear, or to damage solely to the appearance, finish or aesthetics of the Product. Inviscid's liability under this warranty or from the use of the Product shall be limited to the repairing or replacing of the Product, and in no event shall be in an amount greater than the price paid by Purchaser for the Product. This warranty is non-transferable.

5. **Disclaimers:** IMPLIED WARRANTIES, INCLUDING ANY WARRANTY OF MERCHANTABILITY IMPOSED ON THE SALE OF THIS PRODUCT UNDER STATE LAW, ARE LIMITED TO ONE (1) YEAR DURATION FOR THE PRODUCT OR ANY OF ITS PARTS. NO OTHER EXPRESS WARRANTY HAS BEEN MADE OR WILL BE MADE ON BEHALF OF THE WARRANTOR WITH RESPECT TO THE PRODUCT OR THE INSTALLATION, OPERATION, REPAIR, OR REPLACEMENT OF THE PRODUCT. THE WARRANTOR SHALL NOT BE RESPONSIBLE FOR DAMAGE, LOSS OF USE OF THE UNIT,

INCONVENIENCE, LOSS, OR DAMAGE TO PERSONAL PROPERTY, WHETHER DIRECT OR INDIRECT, AND WHETHER ARISING IN CONTRACT OR TORT. Some states do not allow the exclusion or limitation of incidental or consequential damages, or limitations on how long an implied warranty lasts, so the above limitation or exclusion may not apply to you. This warranty gives you specific legal rights, and you may also have other rights that vary from state to state.

For more information visit us at
www.speedfil.com

