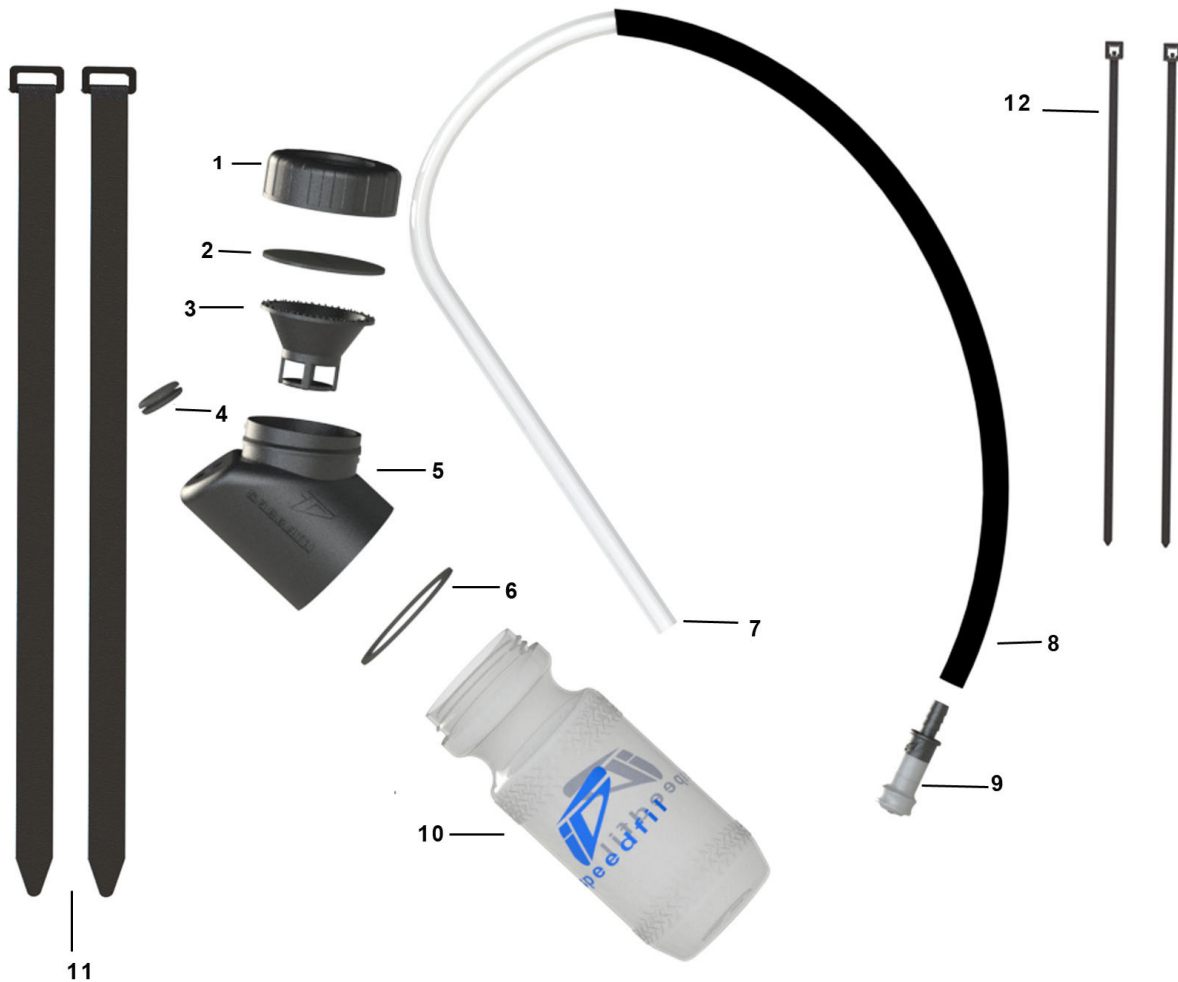


Speedfil F2 Includes:

1. Ring Cap
2. Funnel Gasket
3. Funnel
4. Grommet
5. F2 Adapter
6. Threaded Collar O-Ring
7. Drink Tube
8. Neoprene Sleeve
9. Bite Valve
10. 21 oz. Bottle
11. Hook & Loop Straps (2X)
12. Nylon Cable Ties (2X)

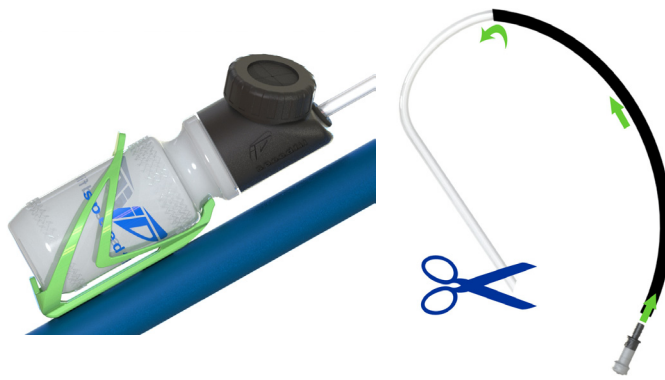
Speedfil Off-Road Bundle Includes:

- Speedfil F2 (below)
- 1. Micro-Retractor
- 2. Non-slip Strap
- 3. Nylon Cable Tie

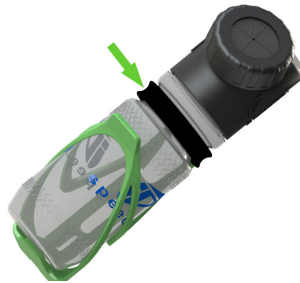


1

- The Speedfil F2 utilizes a standard water bottle, which fits into your existing water bottle cage on the down tube.
- Slide the wired neoprene sleeve over the the drink tube. This sleeve allows for multi-angle positioning of the drink tube.
- Insert the bite valve into the end of the drink tube.
- Cut the tube to desired length using a 45° cut.



2



- Use one strap to secure drink tube to the bike frame.
- Use one strap to secure F2 system to the bottle cage to prevent rotation (optional).
- Depending on handlebar configuration and rider position, use nylon cable ties (included) to secure drink tube to handlebars.

3



- If purchased as an Off-Road Bundle install the Speedfil micro-retractor as shown above.
- The micro-retractor can be positioned on the stem mount, top tube or handlebars depending on rider preference.

4

- **IMPORTANT:** It is the rider's responsibility to ensure drink tube and retractor cord do not impede bike handling capabilities.



- Speedfil recommends the Z4+ cage (sold separately) for the ultimate in rugged riding and bottle security. Includes specialty non-slip strap.



LIMITED WARRANTY

Inviscid Design, Inc. ("Inviscid"), the manufacturer of the *speedfil* product (the "Product") hereby extends the following LIMITED WARRANTY to the original retail owner of the Product ("Purchaser"):

Item(s) Covered: Any defect in material or workmanship of the Product, or any portion thereof.
Term: One (1) year from the date of retail purchase.

1. Inviscid's Responsibility: Inviscid shall, at its sole option, either repair or replace the defective item. Inviscid shall be responsible for shipping and handling charges incurred in returning the replaced or repaired Product to Purchaser. Inviscid shall not be responsible for refunding any amounts paid for the Product, and shall not be responsible for any damage to any other property or persons arising from the use of the Product.

2. Purchaser's Responsibility: Purchaser shall be responsible for all shipping and handling charges incurred in sending the product back to Inviscid for repair or replacement. Purchaser shall also be responsible for providing the original receipt or other satisfactory evidence of the first date of retail purchase.

3. Claim Procedure: Any claim under this warranty should first be initiated with the retailer who sold the Product. If this is not practicable, the owner should contact Inviscid according to the contact information set forth at Inviscid's website, located at <http://www.invisciddesign.com/>, the following address: Inviscid Design, Inc. 7040 Avenida Encinas, Suite 104-657, Carlsbad, CA 92026 or such other address as shown on the California Secretary of State's website. Purchaser shall first obtain authorization for return of the product prior to sending the product directly to Inviscid Design Inc.

4. Limitations: This warranty does not apply to any use of the Product not according to the express directions accompanying the Product, or use with non-approved accessories. This warranty also does not apply to any damage caused by Purchaser's negligence or other misuse, to ordinary wear, or to damage solely to the appearance, finish or aesthetics of the Product. Inviscid's liability under this warranty or from the use of the Product shall be limited to the repairing or replacing of the Product, and in no event shall be in an amount greater than the price paid by Purchaser for the Product. This warranty is non-transferable.

5. Disclaimers: IMPLIED WARRANTIES, INCLUDING ANY WARRANTY OF MERCHANTABILITY IMPOSED ON THE SALE OF THIS PRODUCT UNDER STATE LAW, ARE LIMITED TO ONE (1) YEAR DURATION FOR THE PRODUCT OR ANY OF ITS PARTS. NO OTHER EXPRESS WARRANTY HAS BEEN MADE OR WILL BE MADE ON BEHALF OF THE WARRANTOR WITH RESPECT TO THE PRODUCT OR THE INSTALLATION, OPERATION, REPAIR, OR REPLACEMENT OF THE PRODUCT. THE WARRANTOR SHALL NOT BE RESPONSIBLE FOR DAMAGE, LOSS OF USE OF THE UNIT,

INCONVENIENCE, LOSS, OR DAMAGE TO PERSONAL PROPERTY, WHETHER DIRECT OR INDIRECT, AND WHETHER ARISING IN CONTRACT OR TORT. Some states do not allow the exclusion or limitation of incidental or consequential damages, or limitations on how long an implied warranty lasts, so the above limitation or exclusion may not apply to you. This warranty gives you specific legal rights, and you may also have other rights that vary from state to state.

For more information visit us at www.speedfil.com

